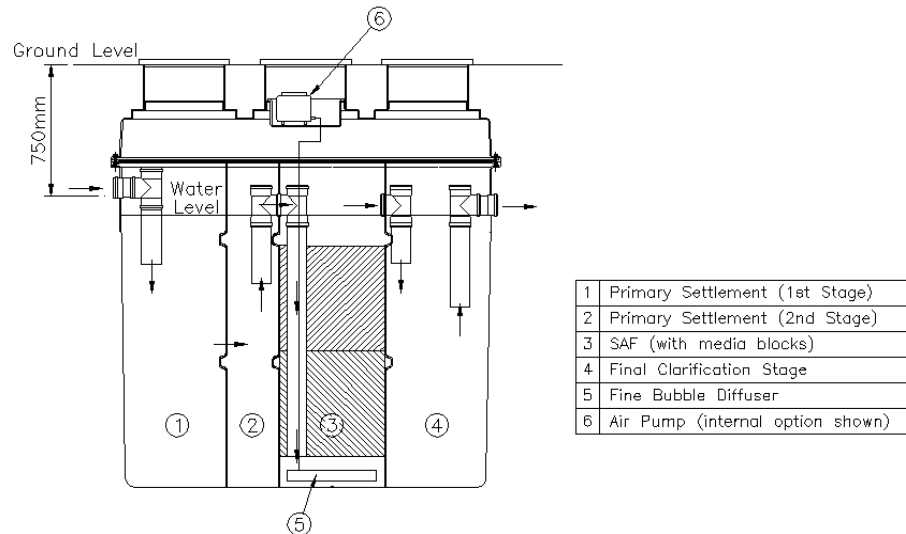
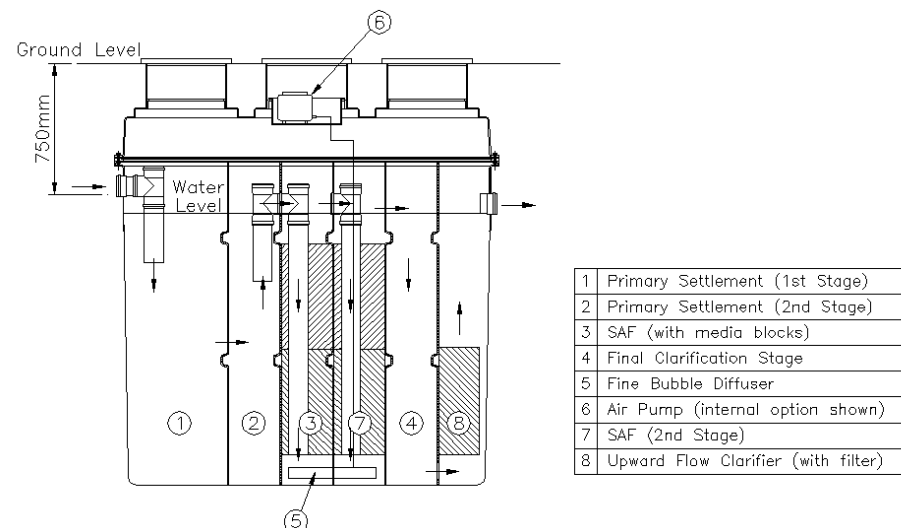


EnSo Ocean Wastewater Treatment Systems – Plant Specification



1	Primary Settlement (1st Stage)
2	Primary Settlement (2nd Stage)
3	SAF (with media blocks)
4	Final Clarification Stage
5	Fine Bubble Diffuser
6	Air Pump (internal option shown)

EnSo Ocean 6 – Internal Layout



1	Primary Settlement (1st Stage)
2	Primary Settlement (2nd Stage)
3	SAF (with media blocks)
4	Final Clarification Stage
5	Fine Bubble Diffuser
6	Air Pump (internal option shown)
7	SAF (2nd Stage)
8	Upward Flow Clarifier (with filter)

EnSo Ocean 12 – Internal Layout

The EnSo Ocean range is manufactured in polyethylene offering a lightweight but strong and impact resistance shell, with the following specifications;

Plant Specification	Ocean 6	Ocean 12
PE (max.)	6	12
Max. Flow (m3/day)	1.2	2.4
Max. Load (kgBOD/day)	0.36	0.72
Desludge Interval (max.)	12 months	6 months
2-stage SAF	no	yes
Upward flow clarifier	no	yes
Inlet Invert (mm)	750 (adjustable)	
Inlet/Outlet Pipe (mm)	Ø110 socket	
Nominal volume (m3)	5.1	
Length A (mm)	2,200	
Width B (mm)	1,700	
Height C (mm)	2,400	
Depth below inlet (mm)	1,650	
Weight (kg)	250	250
Power Consumption (W)	100	170

The plant is designed to provide full treatment of domestic wastewater to an effluent quality that is normally suitable for direct discharge into a watercourse (i.e. effluent qualities better than 20mg/l BOD, 30mg/l SS and 20mg/l ammonia).

However, please ensure that all relevant regulatory bodies (e.g. EA, SEPA, EPA and/or local authorities) have been informed and all necessary documents (e.g. consent to discharge, local planning permission) have been obtained prior to installing and operating any private wastewater treatment plant.